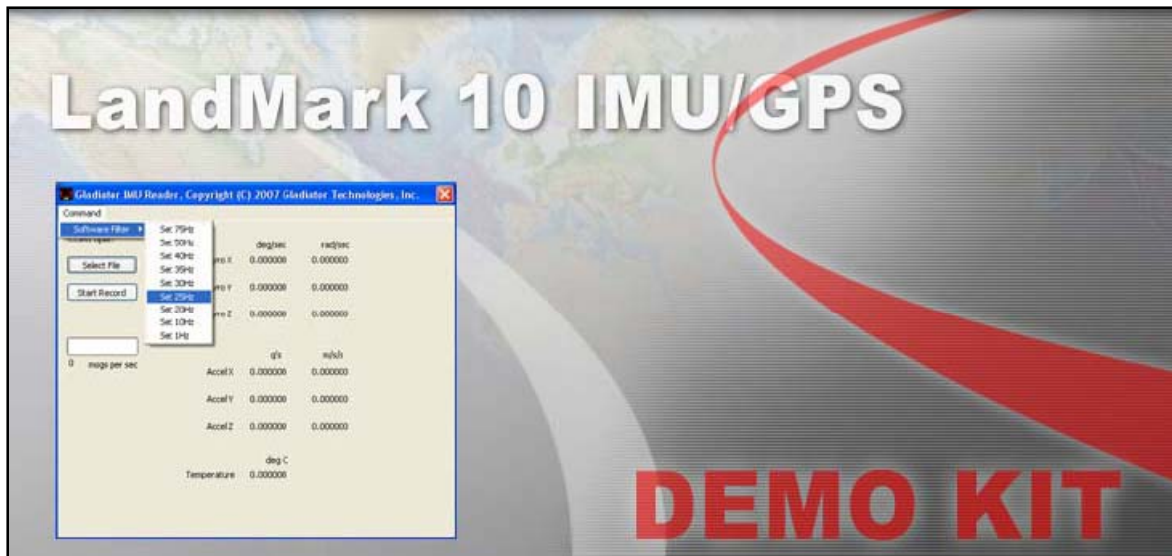
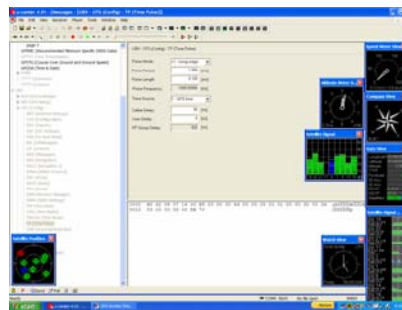
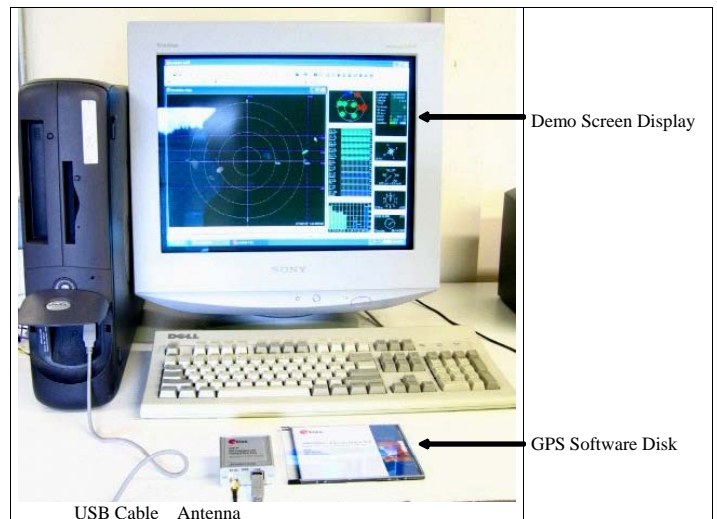


LANDMARK10 IMU/GPS DEMO KIT



- Turn-Key Solution for LandMark10 IMU/GPS on User's PC
- All Software, Cabling, Interface Connectors, Antenna Included and Ready for Use
- Easy Integration of Direct GPS and IMU RS485 to PC's RS232 or USB Interface
- Extensive PC Display Software
- Data Record Capability - IMU & GPS
- Configurable GPS Settings
- User Selectable Bandwidth Settings on IMU
- User Selectable Data Output Rate on IMU and GPS
- Self-Contained Power Supply with either Battery or User Supplied Power
- Battery Supply Has 16 Hours of Operating Life *Typical*
- Self-Test Capability
- Includes Active GPS Antenna, Battery Recharger and Universal Voltage Adapter



Gladiator Technologies, Inc.

Copyright © 2007 Gladiator Technologies, Inc.

Rev. Dec0107
SN: 0001

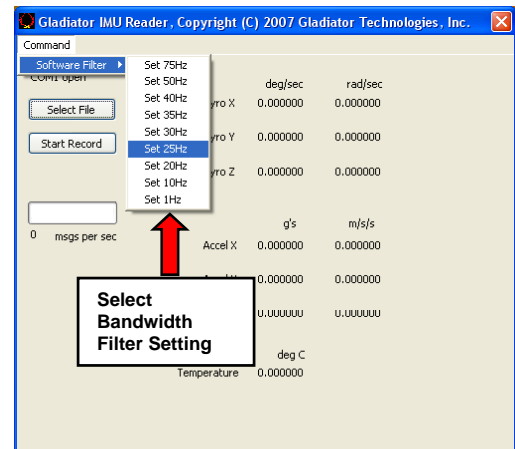
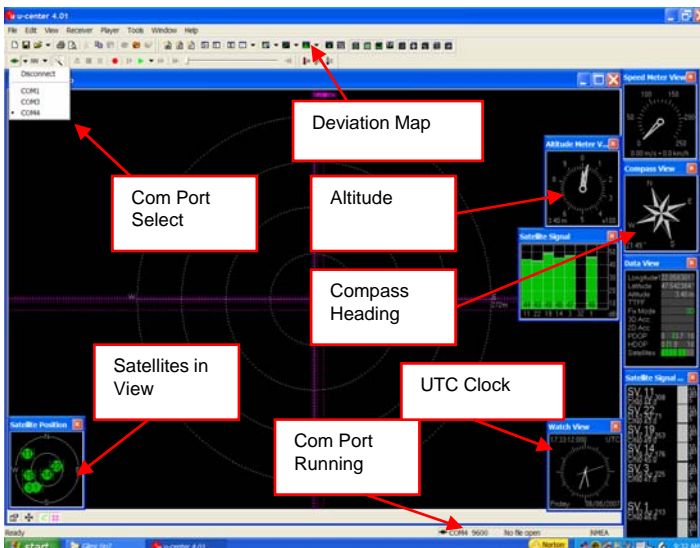
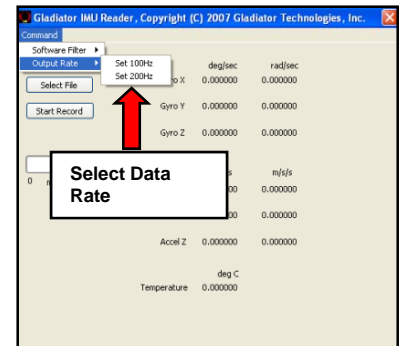
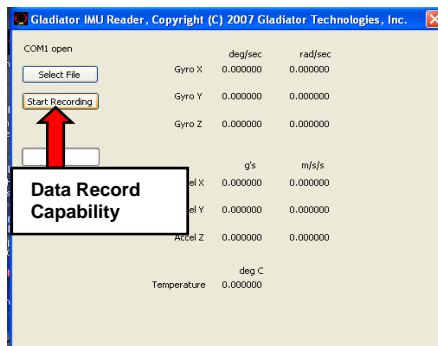
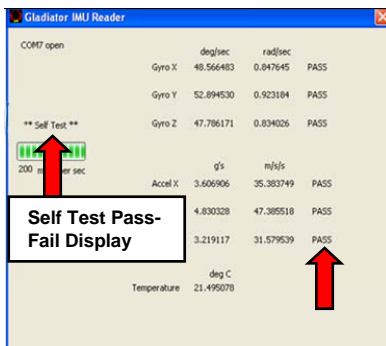
LANDMARK10 IMU/GPS DEMO KIT

LandMark10 IMU/GPS DEMO Kit

LMRK10IGPS-DEMO-110

The LandMark 10 Demonstration Kit is an optional product to assist first time users of the LandMark10 in order to facilitate a rapid setup, test and use of the unit (P/N: LMRK10IGPS-DEMO-110). Please contact the factory or your local Gladiator Representative for in-country service and support at www.GladiatorTechnologies.com.

The LandMark 10 Demonstration Kit includes all cabling required to interface directly from the IMU's RS485 interface to a PC's RS232 or USB interface as well as the GPS USB to a PC's USB or RS485 to PC's RS232 port. The converter cable includes battery powered power supply (there is also wiring on the cable to enable the user to supply their own +3.3V power) and a self-test switch. The battery power supply uses three 9 Volt AA batteries (included with shipment) and supplies user battery power on the IMU/GPS for about 16 hours typical. PC display software is included which enables the user to display each channel of rate, acceleration, altitude and temperature as well as to monitor Self Test Pass parameters. In addition, the GPS display software has a variety of functions that are displayed and also recordable. The IMU record data is in .CSV format and the GPS data record set is in UBX binary format (with NMEA) is also importable into Excel or other user database format. Many other features allow user selectable setting of the bandwidth filter and output data rate.



Specification subject to change without notice.



Gladiator Technologies, Inc.

Copyright © 2007 Gladiator Technologies, Inc.

Sold Through:

LKD Aerospace, Inc. Snoqualmie, WA 98065

Tel: (425) 396-0829 Fax: (425) 396-1129

Email: sales@gladiatortechnologies.com

Web: www.gladiatortechnologies.com

Rev. Dec0107

SN: 0001