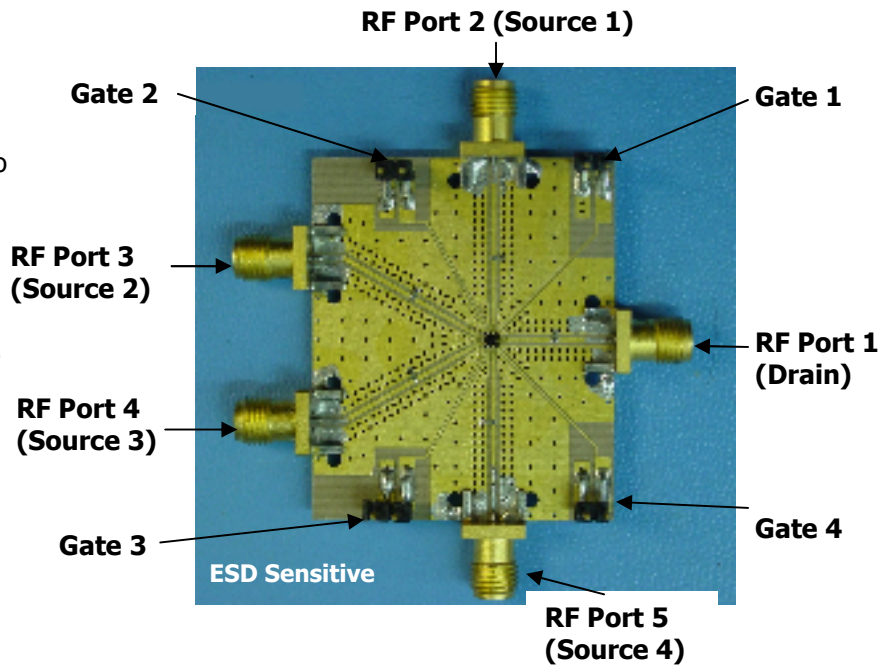


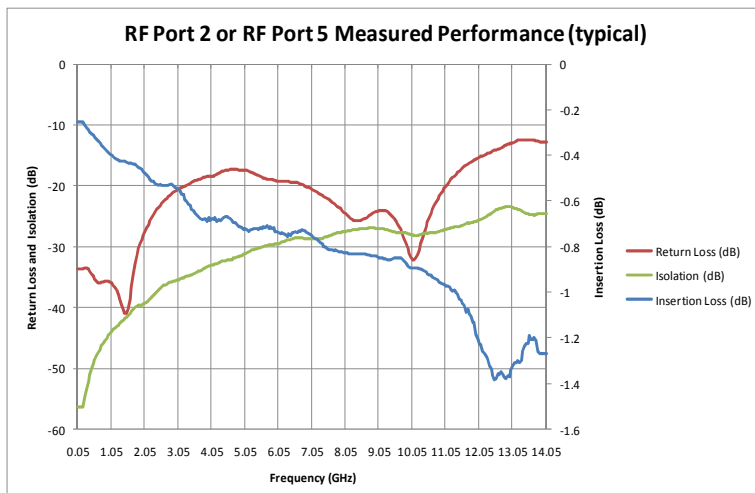
General Description

The evaluation test board has one RMSW240™ SP4T RF switch connected to five SMA RF connectors. The board requires an external supply to provide the gate actuation voltages. Each drain and source connection is triple-bonded to minimize insertion loss and grounded through a 40 kΩ resistor to ensure proper switching and to prevent static damage.



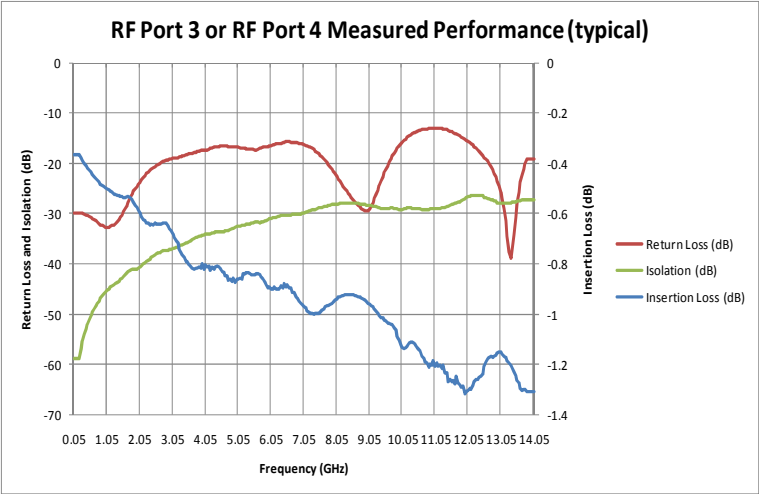
Connections for RF Testing

Gate 1	Gate 2	Gate 3	Gate 4	RF Port 2	RF Port 3	RF Port 4	RF Port 5
+/-90 V	0 V	0 V	0 V	ON	OFF	OFF	OFF
0 V	+/-90V	0 V	0 V	OFF	ON	OFF	OFF
0 V	0 V	+/-90V	0 V	OFF	OFF	ON	OFF
0 V	0 V	0 V	+/-90V	OFF	OFF	OFF	ON



Frequency	Return Loss (dB)	Isolation (dB)	Insertion Loss (dB)
50 MHz	-33.7	56.3	0.3
2 GHz	-28.2	39.5	0.5
4 GHz	-18.4	33.2	0.7
6 GHz	-19.2	29.5	0.7
8 GHz	-24.4	27.5	0.8
10 GHz	-31.7	28.0	0.9
12 GHz	-15.3	25.8	1.2
14 GHz	-12.8	24.5	1.3

RMSW240-EV12 Evaluation Test Board



Frequency	Return Loss (dB)	Isolation (dB)	Insertion Loss (dB)
50 MHz	-29.9	58.9	0.4
2 GHz	-24.1	40.9	0.6
4 GHz	-17.4	34.3	0.8
6 GHz	-16.6	31.1	0.9
8 GHz	-22.1	28.1	0.9
10 GHz	-16.2	29.2	1.1
12 GHz	-15.4	26.9	1.3
14 GHz	-19.1	27.3	1.3