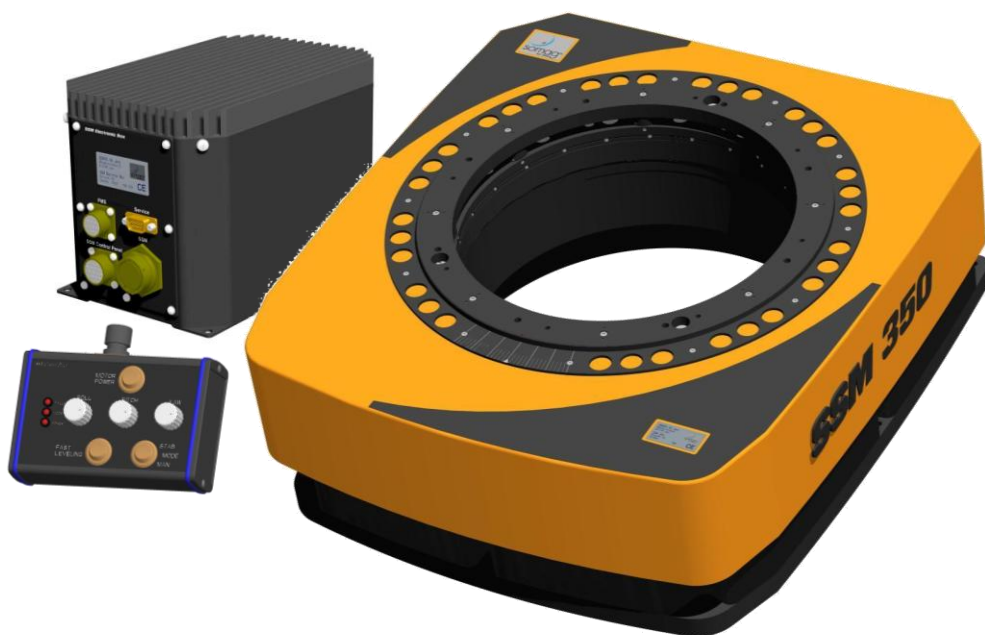


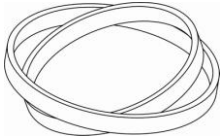
SSM 350



SOMAG AG Jena
Wildenbruchstraße 15
07745 Jena
Germany

Tel.: +49 3641 675 494
Fax: +49 3641 675 499
E-Mail: info@somag-ag.de

Version.: 1.0
Updated: November 03rd, 2010



SSM 350

Specifications



Specifications

angular stabilization ranges:	
random horizontal axis	$\leq \pm 8$ degree
Pitch – at 0 degree Roll	$\leq \pm 11.3$ degree
Roll – at 0 degree Pitch	$\leq \pm 11.3$ degree
Yaw (Drift)	$\leq \pm 15$ degree
compensable angular rates	15 degree/second
compensable angular acceleration	
at a residual angular rate of ≤ 0.3 degree/second rms	≥ 110 degree/second ²
at a residual angular rate of ≤ 1 degree/second rms	≥ 300 degree/second ²
deviation from perpendicular:	
with used IMU (accuracy depends on IMU)	≤ 0.2 degree rms
payload	5 ... 60 kg
operational voltage	28 VDC (24 ... 30 VDC)
power consumption	150 W / 300 W maximum
main fuse	15 Amps circuit breaker
operating temperature	- 25°C ... + 40°C
storage temperature	- 50°C ... + 70°C
mass	~ 30 kg
dimensions (horizontal position)	Length Width Height
	650 585 225
	mm mm mm

preliminary data, subject to change